

State of Wyoming Corner Record

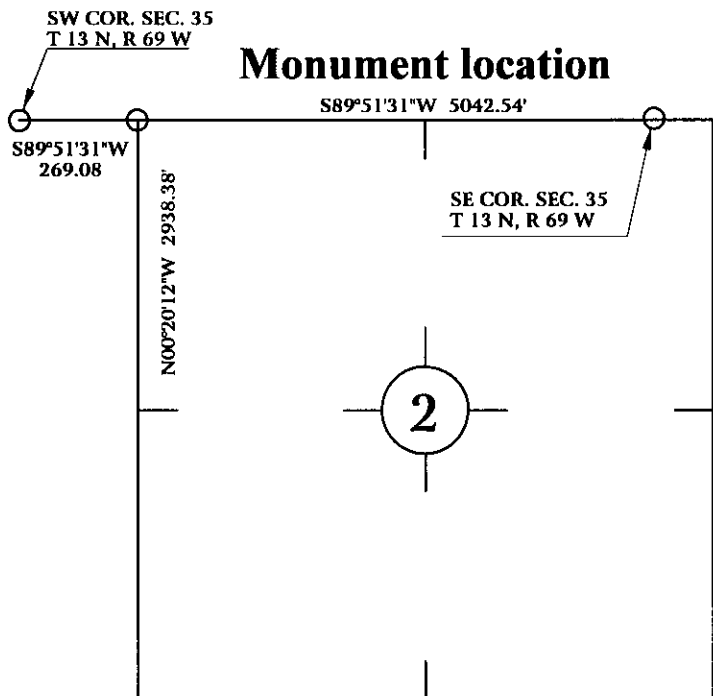
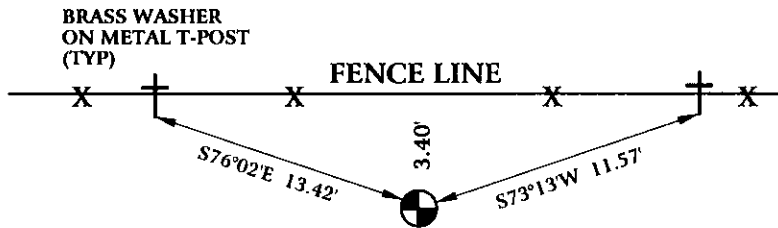
(In compliance with the CORNER PERPETUATION AND FILING ACT, Wyoming Statutes, 1997 Section 33-29-140 et. seq., and the Rules and Regulations of the Board of Professional Engineers and Professional Land Surveyors)

Reverse side of this form may be used if more space is needed.

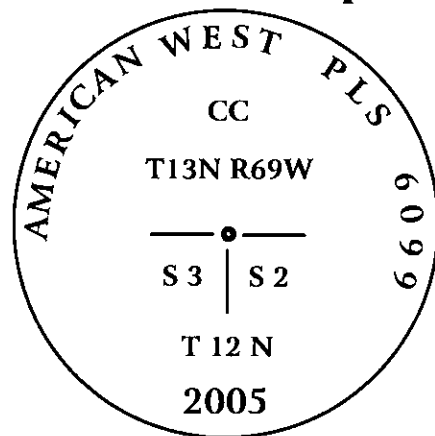
Record of original survey and citation of source of historical information (if corner is lost or obliterated). Description of corner monumentation evidence found and/or monument and accessories established to perpetuate the location of this corner. Sketch of relative location of monument, accessories, and reference points with course and distance to adjacent corner(s) (if determined in this survey). Method and rationale for reestablishment of lost or obliterated corner.

ORIGINAL CALL FOR 15" X 10" X 8" GRANITE BOULDER STONE.

FOUND LONE ORANGE METAL T-POST AT APPROPRIATE LOCATION. ACCEPTED T-POST FOR LINE AND SET 3/4" X 30" REBAR WITH 3 1/4" ALUMINUM CAP P.L.S. 6099, AND SET TIES AS SHOWN BELOW.



Monument Inscription



3 1/4" ALUMINUM CAP ON 3/4" X 30" REBAR

Date of Field Work: April 20, 2005

Office Reference: GALLEGOS05.pro

Cross Index Plat

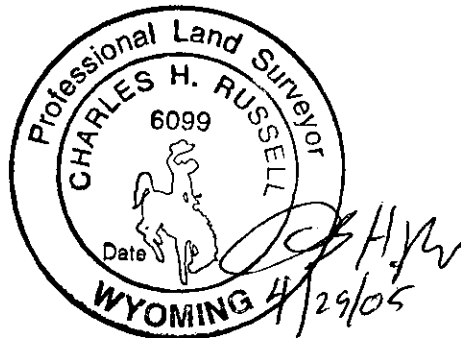
| | | | | | | | | | | | | | | | | | | | | | | | | | | | |
|---|----|----|----|----|----|----|---|---|----|----|----|----|----|----|----|----|----|----|----|----|----|----|----|----|---|---|---|
| 1 | 2 | 3 | 4 | 5 | 6 | 7 | 8 | 9 | 10 | 11 | 12 | 13 | 14 | 15 | 16 | 17 | 18 | 19 | 20 | 21 | 22 | 23 | 24 | 25 | | | |
| A | | | | | | | | | | | | | | | | | | | | | | | | | A | | |
| B | | | | | | | | | | | | | | | | | | | | | | | | | B | | |
| C | 6 | 5 | 4 | 3 | 2 | 1 | | | | | | | | | | | | | | | | | | | C | | |
| D | | | | | | | | | | | | | | | | | | | | | | | | | | D | |
| E | | | | | | | | | | | | | | | | | | | | | | | | | | E | |
| F | | | | | | | | | | | | | | | | | | | | | | | | | | F | |
| G | 7 | 8 | 9 | 10 | 11 | 12 | | | | | | | | | | | | | | | | | | | | G | |
| H | | | | | | | | | | | | | | | | | | | | | | | | | | H | |
| I | | | | | | | | | | | | | | | | | | | | | | | | | | I | |
| J | | | | | | | | | | | | | | | | | | | | | | | | | | J | |
| K | | | | | | | | | | | | | | | | | | | | | | | | | | K | |
| L | 18 | 17 | 16 | 15 | 14 | 13 | | | | | | | | | | | | | | | | | | | | L | |
| M | | | | | | | | | | | | | | | | | | | | | | | | | | M | |
| N | | | | | | | | | | | | | | | | | | | | | | | | | | N | |
| O | | | | | | | | | | | | | | | | | | | | | | | | | | O | |
| P | 19 | 20 | 21 | 22 | 23 | 24 | | | | | | | | | | | | | | | | | | | | P | |
| Q | | | | | | | | | | | | | | | | | | | | | | | | | | Q | |
| R | | | | | | | | | | | | | | | | | | | | | | | | | | R | |
| S | 30 | 29 | 28 | 27 | 26 | 25 | | | | | | | | | | | | | | | | | | | | S | |
| T | | | | | | | | | | | | | | | | | | | | | | | | | | T | |
| U | | | | | | | | | | | | | | | | | | | | | | | | | | U | |
| V | | | | | | | | | | | | | | | | | | | | | | | | | | V | |
| W | | | | | | | | | | | | | | | | | | | | | | | | | | W | |
| X | 31 | 32 | 33 | 34 | 35 | 36 | | | | | | | | | | | | | | | | | | | | X | |
| Y | | | | | | | | | | | | | | | | | | | | | | | | | | | Y |
| Z | | | | | | | | | | | | | | | | | | | | | | | | | | | Z |

Firm/Agency, Address
 CHARLES H. RUSSELL P.L.S. 6099
 AMERICAN WEST LAND SURVEYING CO.
 29 SOUTH 4TH AVENUE
 BRIGHTON, CO 80601

This corner record was prepared by me or under my direction and supervision.

SEAL & SIGNATURE

Telephone Number:
 303-659-1532



RECORDED 6/22/2005 AT 12:35 PM REC# 420193 BK# 1888 PG# 1063
 DEBRA K. LATHROP, CLERK OF LARAMIE COUNTY, WY PAGE 1 OF 1

Corner Name: Northwest Corner, Section 2, T 12 N, R 69 W, 6th P.M.

Cross-Index No.: A-17

County: Laramie

SBRPEPLS/PLSW: March 1994; PLSW January 1998